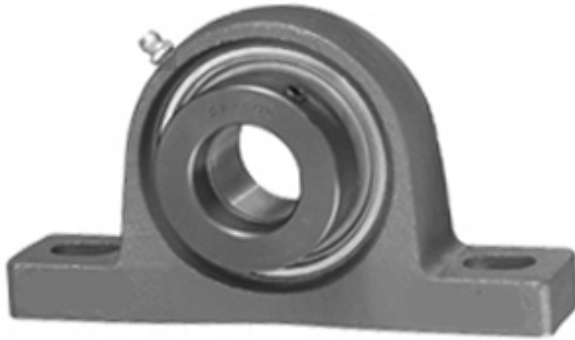




Hebei Hailan Bearing Manufacture Co.,...

0.875 Inch | 22.225 Millimeter x 1.221 Inch |
 31.013 Millimeter x 1.438 Inch | 36.525 Millimeter
 IPTCI SALP 205 14 G Pillow Block Bearings



Bearing No. SALP 205 14 G

SALP 205 14 G Bearing 2D drawings and 3D CAD models

Category	Pillow Block Bearings
Inventory	0.0
Manufacturer Name	IPTCI BEARINGS
Minimum Buy Quantity	N/A
Weight	0.635
Product Group	M06110
Number of Mounting Holes	2
Mounting Method	Eccentric Collar
Housing Style	2 Bolt Pillow Block
Rolling Element	Ball Bearing
Housing Material	Cast Iron
Expansion / Non-expansion	Non-expansion
Mounting Bolts	3/8 Inch
Relubricatable	Yes
Insert Part Number	SA205-14G
Seals	K Seal
Housing Configuration	1 Piece Solid
Inch - Metric	Inch
Other Features	Single Row Light Duty Narrow Inner Race
Long Description	2 Bolt Pillow Block; 7/8" Bore; 1-7/16" Base to Center Height; Eccentric Collar Mount; Ball Bearing; Relubricatable; Cast Iron; K Seal; Non-expansion



Hebei Hailan Bearing Manufacture Co.,...

Category	Pillow Block
UNSPSC	31171511
Harmonized Tariff Code	8483.20.40.40
Noun	Bearing
Keyword String	Pillow Block
Manufacturer URL	http://www.iptci.com
Manufacturer Item Number	SALP 205 14 G
Weight / LBS	1.4
B	1.438 Inch 36.525 Millimeter
Bolt Spacing Maximum	0 Inch 0Millimeter
Nominal Bolt Center to Center	3.9 Inch 100 Millimeter
Actual Bolt Center to Center	3.9 Inch 100Millimeter
d	0.875 Inch 22.225 Millimeter
Bolt Spacing Minimum	0 Inch 0Millimeter
D	1.221 Inch 31.013 Millimeter