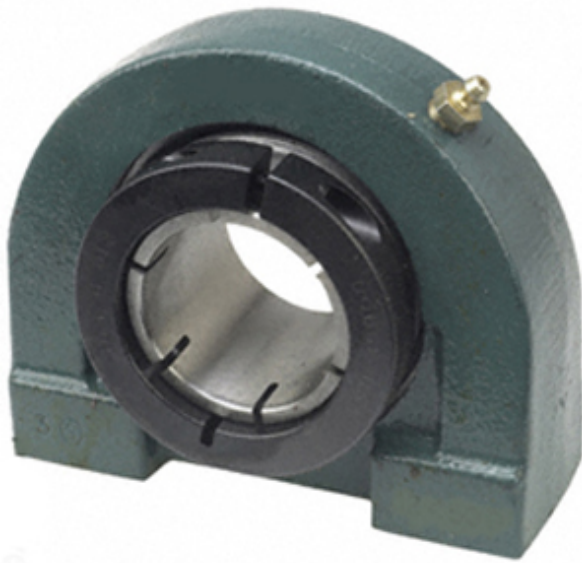




## Hebei Hailan Bearing Manufacture Co.,...



1.25 Inch | 31.75 Millimeter x 1.75 Inch | 44.45  
Millimeter x 1.875 Inch | 47.63 Millimeter DODGE  
TB-DL-104 Pillow Block Bearings

Bearing No. TB-DL-104

TB-DL-104 Bearing 2D drawings and 3D CAD models

Category	Pillow Block Bearings
Inventory	0.0
Manufacturer Name	ABB MOTORS AND MECHANICAL INC
Minimum Buy Quantity	N/A
Weight	1.916
EAN	0782475891214
Product Group	M06110
Number of Mounting Holes	2
Mounting Method	Concentric Collar
Housing Style	2 Bolt Tap Base Pillow Block
Rolling Element	Ball Bearing
Housing Material	Cast Iron
Expansion / Non-expansion	Non-expansion
Mounting Bolts	1/2 Inch
Relubricatable	Yes
Insert Part Number	INS-DL-104
Seals	Single Lip Contact
Housing Configuration	1 Piece Solid
Inch - Metric	Inch
Other Features	Single Row   Normal Duty   Wide Inner Race
Long Description	2 Bolt Tap Base Pillow Block; 1-1/4" Bore; 1-7/8" Base to Center Height; Concentric Collar Mount;



## Hebei Hailan Bearing Manufacture Co.,...

	Ball Bearing; Relubricatable; Cast Iron; Single Lip Contact; Non-expansion
Category	Pillow Block
UNSPSC	31171511
Harmonized Tariff Code	8483.20.40.40
Noun	Bearing
Keyword String	Pillow Block
Manufacturer URL	<a href="http://www.dodge-pt.com">http://www.dodge-pt.com</a>
Manufacturer Item Number	TB-DL-104
Manufacturer Internal Number	128748
Weight / LBS	4.7
Bolt Spacing Maximum	0 Inch   0Millimeter
B	1.875 Inch   47.63 Millimeter
Nominal Bolt Center to Center	3.3 Inch   84 Millimeter
D	1.75 Inch   44.45 Millimeter
d	1.25 Inch   31.75 Millimeter
Bolt Spacing Minimum	0 Inch   0Millimeter
Actual Bolt Center to Center	3.3 Inch   84Millimeter