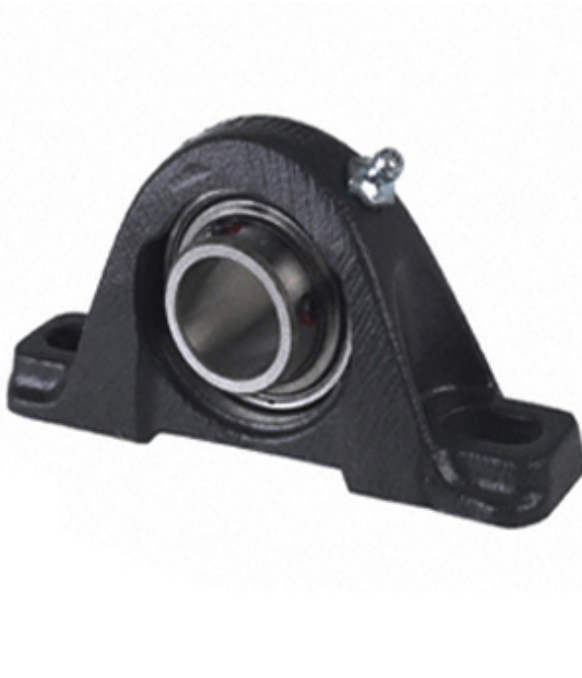




Hebei Hailan Bearing Manufacture Co.,...



YAK 25 SGT Bearing 2D drawings and 3D CAD models

0.984 Inch | 25 Millimeter x 1.343 Inch | 34.1
Millimeter x 1.311 Inch | 33.3 Millimeter TIMKEN
YAK 25 SGT Pillow Block Bearings

Bearing No. YAK 25 SGT

Category	Pillow Block Bearings
Inventory	0.0
Manufacturer Name	TIMKEN
Minimum Buy Quantity	N/A
Weight	0.94
EAN	0087796265233
Product Group	M06110
Number of Mounting Holes	2
Mounting Method	Set Screw
Housing Style	2 Bolt Pillow Block
Rolling Element	Ball Bearing
Housing Material	Cast Iron
Expansion / Non-expansion	Non-expansion
Mounting Bolts	10 Millimeter
Relubricatable	Yes
Insert Part Number	GYE25KRRB
Seals	Double Land Riding Rubber Contact
Housing Configuration	1 Piece Solid
Inch - Metric	Metric
Other Features	Single Row Spherical Normal Duty Low Base Black Housing Powder Coated Epoxy Finish
Long Description	2 Bolt Pillow Block; 25MM Bore; 33.3MM Base to



Hebei Hailan Bearing Manufacture Co.,...

	Center Height; Set Screw Mount; Ball Bearing; 84.1MM Minimum Bolt Spacing; 125.4MM Bolt Spacing Maximum; Relubricatable; Cast Iron; Double Land Riding Ru
Category	Pillow Block
UNSPSC	31171511
Harmonized Tariff Code	8483.20.40.40
Noun	Bearing
Keyword String	Pillow Block
Manufacturer URL	http://www.timken.com
Manufacturer Item Number	YAK 25 SGT
Weight / LBS	2.059
Actual Bolt Center to Center	0 Inch 0Millimeter
B	1.311 Inch 33.3 Millimeter
Nominal Bolt Center to Center	4.1 Inch 105 Millimeter
Bolt Spacing Minimum	3.311 Inch 84.1Millimeter
Bolt Spacing Maximum	4.937 Inch 125.4Millimeter
d	0.984 Inch 25 Millimeter
D	1.343 Inch 34.1 Millimeter
Shaft Size d	0.984 in
Bearing Type	Ball Bearing
Inside Ring Outside Diameter	1.332 in
Dimension T	0.736 in
Dimension D1	1.331 in
Series	Industrial
Weight	1.967 lb
Seal Type	Shroud Seal
Base to Center Height H	33.34 mm
Total Length L	139.70 mm



Hebei Hailan Bearing Manufacture Co.,...

Total Width A	1.469 in
Bolt Hole Spacing J	104.8 mm
Bolt Hole Width N	11.1 mm
Bolt Hole Length N1	20.6 mm
Foot Height H1	11.9 mm
Total Height H2	70.00 mm
Dimension L1	46.6 mm
Inside Ring Width B	=Bearings1_Inside Ring Width= mm
Center of Bearing from End S	14.3 mm
Dimension B1	1.374 in
Static Load Rating	1750 lbf
Dynamic Load Rating	3490 lbf